

RMBI Older Peoples Support Service

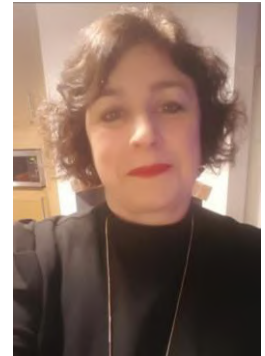
Launched in July 2022, the RMBI Care Co advice scheme continues to provide north-west Freemasons and their families **support and guidance navigating the many issues around care.**

Older Persons' Support Adviser, Hazel Salter also provides guidance and information on

- how to access the care you need
- selecting a care home
- what to look for when you visit homes
- understanding CQC reports
- financial assessments and care home fees
- financial support that may be available if you are paying Third-Party top-ups towards the cost of care for a loved one.

Living in Sandbach, Cheshire Hazel previously worked for both Citizens Advice and Age UK and is well-placed to support freemasons and their families through their care journey.

Hazel is happy to attend meetings and training sessions to give updates and more information, so if you have an event you would like her to attend, please give her a call.



If you or any members of your Lodge have any questions or know anyone in need of support and guidance with issues around care, **call Hazel direct on 07717 019752 or email hsalter@rmbi.org.uk**

